

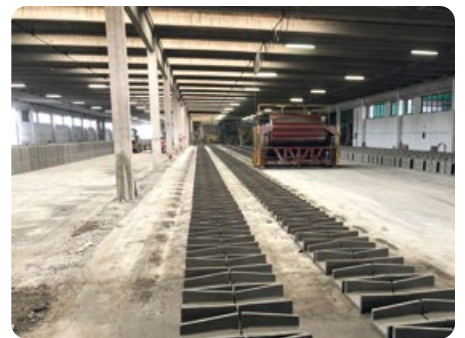


CGM
MACHINES FOR CONCRETE PRODUCTS



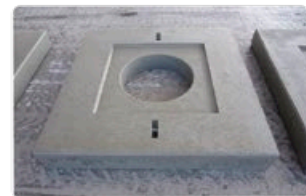
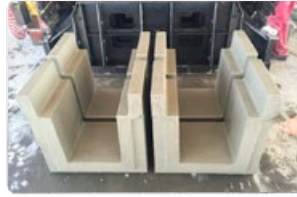
FEATURES:

- ✓ High productivity
- ✓ Reliable
- ✓ Versatile
- ✓ Special elements
- ✓ Fast
- ✓ Easy to use
- ✓ High saving
- ✓ Infinite variety of shapes



Machines, Moulds, Plants
for the production of concrete elements

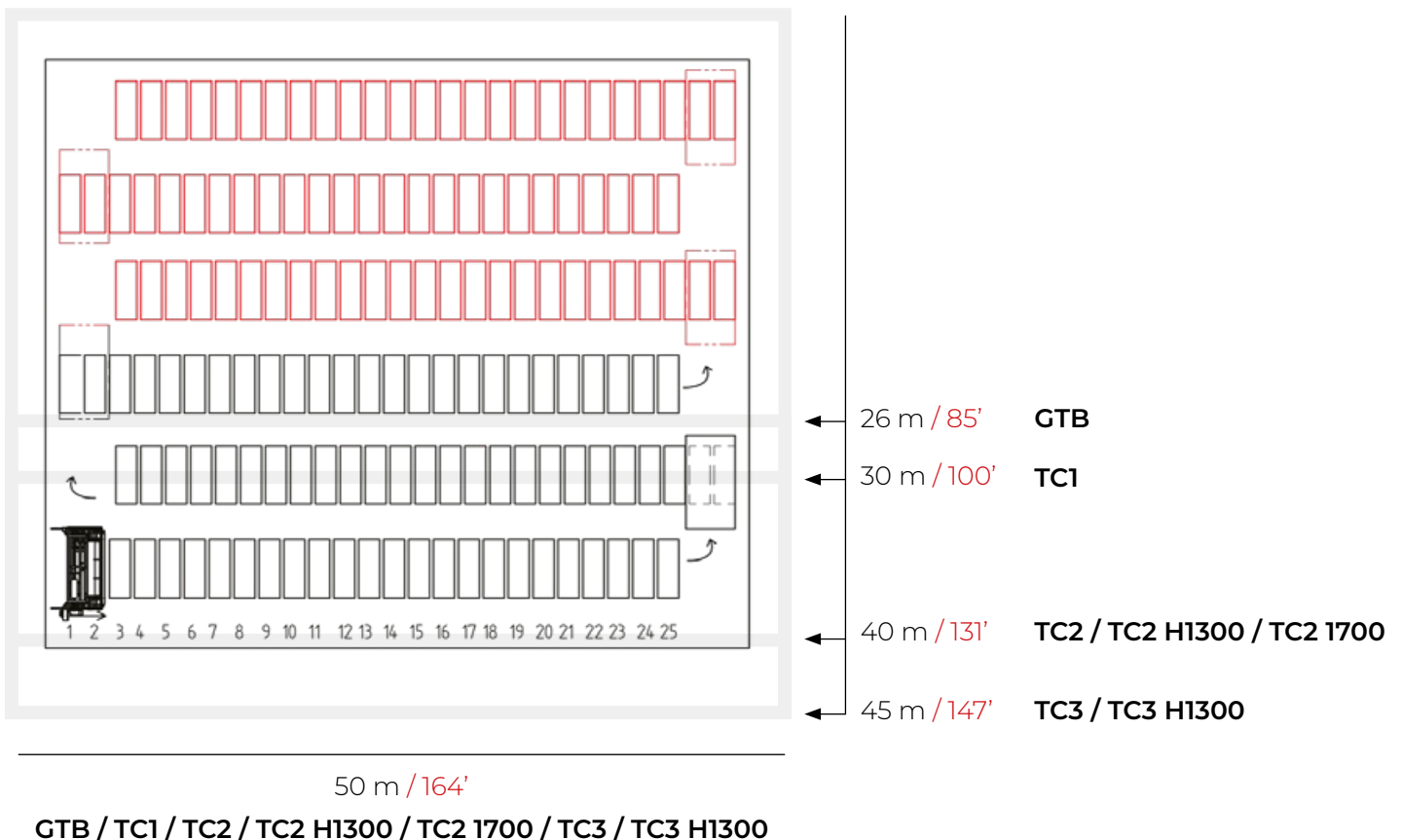
INFINITE VARIETY OF SHAPES



BASIC REQUIREMENTS PLANT CONDITION

BATCHING PLANT	Moisture Automation control Aggregate weighing system Planetary mixer
PLANETARY MIXER SUGGESTED CAPACITY	GTB 1 m ³ / 1.30 yd ³ TC1 1 m ³ / 1.30 yd ³ TC2 1.5 m ³ / 2.00 yd ³ TC2 H1300 1.5-2 m ³ / 2-2.6 yd ³ TC2 1700 1.5-2 m ³ / 2-2.6 yd ³ TC3 1.5-2 m ³ / 2-2.6 yd ³
*to be verified with CGM technical department	
FORKLIFT	Minimum capacity 3.000 kg 15/20 cm of thk. / 5.90" / 7.87" of thk.
FLAT CONCRETE FLOOR	No bumps No obstacles No slopes
WORKSHOP TOOLS	Welder Grinder Shovel Broom Trowel
ELECTRIC POWER SUPPLY	GTB 11 kw TC1 15 kw TC2 15 kw TC2 H1300 18.5 kw TC2 1700 22.5 kw TC3 15 kw
WATER BLASTING	For the daily washing procedure after production

2 DAYS SUGGESTED PRODUCTION COVERED AREA



GTB

machines dimensions

3950 x 3280 x H 3200 mm*
12.96' x 10.76' x H 10.50' *

Maximum Width of the product

1400 mm* / 4,59'*

Maximum Height of the product

1100 mm* / 3,6'*

Hopper loading height

2370 mm / 7.77'*

Mixer capacity requirement

1 m³ / 1.30 yd³

Rated power

11 kw

Installed vibration

Electronic, with inverter

Production cycle average time

2 / 6 minutes

Machine weight

6100 kg / 13448 lb



TCl

machines dimensions

3900 x 4030 x H 3230 mm*
12.80' x 13.22' x H 10.60' *

Maximum Width of the product

2000 mm* / 6,56'*

Maximum Height of the product

1100 mm* / 3,6'*

Hopper loading height

2360 mm / 7.74'*

Mixer capacity requirement

1 m³ / 1.30 yd³

Rated power

15 kw

Installed vibration

Electronic, with inverter

Production cycle average time

3 / 6 minutes

Machine weight

7500 kg / 16534 lb



TC2

machines dimensions

4900 x 4030 x H 3230 mm*
16.08' x 13.22' x H 10.60' *

Maximum Width of the product
3000 mm* / 9.84'*

Maximum Height of the product
1100 mm* / 3.6'*

Hopper loading height
2360 mm / 7.74'*

Mixer capacity requirement
1.5 m³ / 2 yd³

Rated power
15 kw

Installed vibration
Electronic, with inverter

Production cycle average time
3 / 6 minutes

Machine weight
9500 kg / 20944 lb



TC3

machines dimensions

5900 x 4030 x H 3310 mm*
19.36' x 13.22' x H 10.86' *

Maximum Width of the product
4000 mm* / 13.12'*

Maximum Height of the product
1100 mm* / 3.6'*

Hopper loading height
2360 mm / 7.74'*

Mixer capacity requirement
1.5-2 m³ / 2-2.6 yd³

Rated power
15 kw

Installed vibration
Electronic, with inverter

Production cycle average time
3 / 6 minutes

Machine weight
14500 kg / 31967 lb



TC2 H1300

machines dimensions

5000 x 4100 x H 3660 mm*
16.40 x 13.45 x H 12.00*

Maximum Width of the product

3000 mm* / 9.84*

Maximum Height of the product

1300 mm* / 4.26*

Hopper loading height

2600 mm / 8.53*

Mixer capacity requirement

1.5-2 m³ / 2-2.6 yd³

Rated power

18.5 kw

Installed vibration

Electronic, with inverter

Production cycle average time

3 / 6 minutes

Machine weight

11000 kg / 24250 lb



TC2 1700

machines dimensions

5800 x 5900 x H 4800 mm*
19' x 19.4' x H 15.75*

Maximum Width of the product

3000 mm* / 9.84*

Maximum Height of the product

1700 mm* / 5.57*

Hopper loading height

3200 mm / 10.50*

Hopper width

3300 mm / 10.83*

Mixer capacity requirement

1.5-2 m³ / 2-2.6 yd³

Rated power

22.5 kw

Installed vibration

Electronic, with inverter

Production cycle average time

2 / 10 minutes

Machine weight

17000 kg / 37479 lb



Notes: Data and images in this brochure are illustrative to present the product.
CGM reserves the right to change the data or products presented

TC3 H1300

machines dimensions

6360 x 3880 x H 3600 mm*
20.87' x 12.73' x H 11.81'*

Maximum Width of the product

4000 mm* / 13.12'*

Maximum Height of the product

1300 mm* / 4.26'*

Hopper loading height

2600 mm / 8.53'*

Hopper width

3800 mm / 12.47'*

Mixer capacity requirement

1.5-2 m³ / 2-2.6 yd³

Rated power

15 kw

Installed vibration

Electronic, with inverter

Production cycle average time

5 / 12 minutes

Machine weight

15000 kg / 33069 lb



CUSTOMIZED PLANTS





CGM

MACHINES FOR CONCRETE PRODUCTS

C.G.M. S.R.L.

Viale De' Brozzi, 87/2
48022 Lugo (RA) - Italy

Tel: +39 0545 35294

Fax: +39 0545 32297

www.cgm-srl.com
info@cgm-srl.com